



**FORKLIFT FAMILY**  
**HEAVYWEIGHT**  
**LIFTING IN EVERY**  
**SIZE YOU NEED**

**GALAXY**  
APPLICATION SPECIFIC, PURPOSE BUILT.

## SOLID TIRES

### GALAXY YM SDS (SMOOTH) - POB SOLID

The Galaxy YM SDS press-on solid tire is specially designed to provide high lateral load carrying capacity and excellent stability. It is ideal for severe duty service performed on hard and improved industrial surfaces.



PRODUCT CODE		SIZE	ALT	PR/LI	TYPE	WEAR LIMIT	RIM	OD	WIDTH	MAX LOAD	MAX SPEED
BLACK	NON MARKING										
635009	637009	10x5x61/2		N/A	Solid	NA	Steel Band	10	5	2237	10
635863		12X4 1/2X8		N/A	Solid	NA	Steel Band	12	4.5	1719	10
635018	637018	14x41/2x8		N/A	Solid	NA	Steel Band	14	4.5	2579	10
635008	637008	14X5X10		N/A	Solid	NA	Steel Band	14	5	2943	10
635060	637060	16x5x101/2		N/A	Solid	NA	Steel Band	16	5	3329	10
635062	637062	16x6x101/2		N/A	Solid	NA	Steel Band	16	6	4210	10
635063	637063	16x7x101/2		N/A	Solid	NA	Steel Band	16	7	5125	10
635078	637078	15x5x111/4		N/A	Solid	NA	Steel Band	15	5	3064	10
635066	637066	161/4x5x111/4		N/A	Solid	NA	Steel Band	16.25	5	3373	10
635068	637068	161/4x6x111/4		N/A	Solid	NA	Steel Band	16.25	6	4232	10
635070	637070	161/4x7x111/4		N/A	Solid	NA	Steel Band	16.25	7	5125	10
635106	637106	18x6x121/8		N/A	Solid	NA	Steel Band	18	6	4629	10
635107	637107	18x7x121/8		N/A	Solid	NA	Steel Band	18	7	5621	10
635108	637108	18x8x121/8		N/A	Solid	NA	Steel Band	18	8	6613	10
635123	637123	21x7x15		N/A	Solid	NA	Steel Band	21	7	6338	10
635140	637140	21x8x15		N/A	Solid	NA	Steel Band	21	8	7440	10
635144	637144	21x9x15		N/A	Solid	NA	Steel Band	21	9	8598	10
635148	637148	22x8x16		N/A	Solid	NA	Steel Band	22	8	7716	10
635149	637149	22x9x16		N/A	Solid	NA	Steel Band	22	9	8928	10
635157	637157	22x12x16		N/A	Solid	NA	Steel Band	22	12	12401	10
635159	637159	22x14x16		N/A	Solid	NA	Steel Band	22	14	14804	10
635160	637160	28x10x22		N/A	Solid	NA	Steel Band	28	10	12919	10
635161	637161	28x12x22		N/A	Solid	NA	Steel Band	28	12	15939	10

### GALAXY YM SDS (TRACTION) - POB SOLID

The Galaxy YM SDS Traction is specially constructed to fulfill requirements of severe duty operations performed in warehouse and shop-floor. Special compound ensures protection against damages while plying on industrial surfaces.



PRODUCT CODE		SIZE	ALT	PR/LI	TYPE	WEAR LIMIT	RIM	OD	WIDTH	MAX LOAD	MAX SPEED
BLACK	NON MARKING										
605009	606009	10X5X61/2		N/A	Solid	NA	Steel Band	10	5	2237	10
605018	606018	14X41/2X8		N/A	Solid	NA	Steel Band	14	4.5	2579	10
605008	606008	14X5X10		N/A	Solid	NA	Steel Band	14	5	2943	10
605060	606060	16X5X10 1/2		N/A	Solid	NA	Steel Band	16	5	3329	10
605062	606062	16X6X10 1/2		N/A	Solid	NA	Steel Band	16	6	4210	10
605063	606063	16X7X10 1/2		N/A	Solid	NA	Steel Band	16	7	5125	10
605078	606078	15X5X11 1/4		N/A	Solid	NA	Steel Band	15	5	3064	10
605066	606066	16 1/4X5X11 1/4		N/A	Solid	NA	Steel Band	16.25	5	3373	10
605068	606068	16 1/4X6X11 1/4		N/A	Solid	NA	Steel Band	16.25	6	4232	10
605070	606070	16 1/4X7X11 1/4		N/A	Solid	NA	Steel Band	16.25	7	5125	10
605106	606106	18X6X12 1/8		N/A	Solid	NA	Steel Band	18	6	4629	10
605107	606107	18X7X12 1/8		N/A	Solid	NA	Steel Band	18	7	5621	10
605108	606108	18X8X12 1/8		N/A	Solid	NA	Steel Band	18	8	6613	10
605123	606123	21X7X15		N/A	Solid	NA	Steel Band	21	7	6338	10
605140	606140	21X8X15		N/A	Solid	NA	Steel Band	21	8	7440	10
605144	606144	21X9X15		N/A	Solid	NA	Steel Band	21	9	8598	10
605148	606148	22X8X16		N/A	Solid	NA	Steel Band	22	8	7716	10
605149	606149	22X9X16		N/A	Solid	NA	Steel Band	22	9	8928	10
605157	606157	22X12X16		N/A	Solid	NA	Steel Band	22	12	12401	10
605159	606159	22X14X16		N/A	Solid	NA	Steel Band	22	14	14804	10
605160	606160	28X10X22		N/A	Solid	NA	Steel Band	28	10	12919	10
605161	606161	28X12X22		N/A	Solid	NA	Steel Band	28	12	15939	10

## GALAXY LIFTER SDS - RESILIENT SOLID TIRE ONLY

Lifter SDS is specially designed keeping in mind the needs of forklifts performing low-intensity operations. Its robust construction is made up of high performing rubber compounds, ensuring excellent durability.



PRODUCT CODE	SIZE	PR/LI	TYPE	TREAD	PREFERRED RIM	OD	WIDTH	MAX LOAD	MAX SPEED
638022	5.00-8	N/A	Solid	50	3.00D-8	17.9	4.8	3120	16
638065	15x4½-8	N/A	Solid	40	3.00D-8	14.8	4.4	2290	16
638061	16x6-8	N/A	Solid	47	4.33R	16	5.9	3290	16
638033	18x7-8	N/A	Solid	55	4.33R	17.8	6.1	4730	16
638038	140/55-9	N/A	Solid	35	4.00E	15	5.2	2580	16
638041	6.00-9	N/A	Solid	56	4.00E	20.6	5.4	4150	16
638095	200/50-10	N/A	Solid	45	6.50F	18.1	7.6	5440	16
638051	6.50-10	N/A	Solid	59	5.00F	22.2	6.5	5810	16
638053	23x9-10	N/A	Solid	51	6.50F	22.8	7.8	7600	16
638080	7.00-12	N/A	Solid	64	5.00S	25.5	6.6	6640	16
638122	7.00-15	N/A	Solid	65	5.5	27.4	7.0	7810	16
638133	28x9-15	N/A	Solid	67	7	27	8.6	7590	16
638139	8.25-15	N/A	Solid	81	6.5	31.9	8.3	10470	16
638843	250-15	N/A	Solid	78	7	28.2	9.1	10460	16
638056	300-15	N/A	Solid	95	8	32	10.1	12890	16
638319	10.00-20	N/A	Solid	99	7.5	39.7	9.8	13230	16
641319*	10.00-20	N/A	Solid	99	7.5	39.7	9.8	13230	16

## GALAXY YARDMASTER SDS - RESILIENT SOLID TIRE ONLY

The Galaxy YardMaster SDS has a large industrial block pattern that increases life of the tread while promoting superior grip. Steel wire creel beads improve grip with rim and prevent rim slippage.



PRODUCT CODE		SIZE	ALT	PR/LI	TYPE	TREAD	PREFERRED RIM	OD	WIDTH	MAX LOAD	MAX SPEED
STANDARD TYPE	LIP TYPE										
601022	582022	5.00-8		N/A	Solid	50	3.00D	18	4.8	3120	15
601065	582065	15x4.5-8	125/75-8	N/A	Solid	40	3.00D	14.8	4.4	2290	16
601061	582061	16x6-8	150/75-8	N/A	Solid	47	4.33R	16	5.9	3290	16
601033	582033	18x7-8	180/70-8	N/A	Solid	55	4.33R	17.9	6	4730	16
601038	582038	140/55-9		N/A	Solid	35	4.00E	14.9	5.2	2580	16
601041	582041	6.00-9		N/A	Solid	56	4.00E	20.6	5.4	4150	16
601044	582044	21x8-9	200/75-9	N/A	Solid	61	6.00E	20.4	7.4	6070	16
601095	582095	200/50-10		N/A	Solid	45	6.50F	18.2	7.5	5440	16
601051	582051	6.50-10		N/A	Solid	59	5.00F	22.2	6.4	5810	16
601036		6.50-10		N/A	Solid	59	5.50F	22.2	6.4	5810	16
601053	582053	23X9-10		N/A	Solid	64	6.50F	22.9	7.7	7600	16
601080	582080	7.00-12		N/A	Solid	64	5.00S	25.5	6.6	6640	16
601071	582071	23X10-12		N/A	Solid	63	8.00G	22.8	9.1	8240	16
601082	582082	27X10-12		N/A	Solid	78	8.00G	26.5	9.4	8530	16
601122	582122	7.00-15		N/A	Solid	65	5.5	28.5	7.1	7810	16
601125		7.50-15		N/A	Solid	77	6.5	29.6	7.6	8600	16
601129		7.50-15		N/A	Solid	77	5.5	29.6	7.6	8600	16
601133	582133	8.15-15	28x9-15	N/A	Solid	67	7	27	8.6	7590	16
601139	582139	8.25-15		N/A	Solid	81	6.5	31.9	8.3	10470	16
601842		250-15		N/A	Solid	78	7.5	28.2	9.1	10460	16
601843	582843	250-15		N/A	Solid	78	7	28.2	9.1	10460	16
601056	582056	300-15	315/70-15	N/A	Solid	95	8	32	10.1	12890	16
601312		10.00-20		N/A	Solid	99	7.5	39.8	9.9	13230	16
601319		10.00-20		N/A	Solid	99	7	39.8	9.9	13230	16
601234		12.00-20		N/A	Solid	114	8	42.9	10.5	13890	16
601335		12.00-20		N/A	Solid	114	8.5	42.9	10.4	13890	16
601399		12.00-24		N/A	Solid	116	8.5	46.5	11.1	14770	16

## SOLID TIRES

### GALAXY LIFTOP SDS NON-MARKING - RESILIENT SOLID TIRE ONLY

The Galaxy Liftop SDS non-marking tire is specially designed for forklifts performing severe duty applications in warehouses. Special tread design with optimum tread depth ensures grip and stability.



PRODUCT CODE		SIZE	ALT	PR/LI	TYPE	TREAD	PREFERRED RIM	OD	WIDTH	MAX LOAD	MAX SPEED
STANDARD TYPE	LIP TYPE										
600022	560022	500-8		N/A	Solid	55	3	17.7	4.7	3120	16
600064	560064	15X41/2-8		N/A	Solid	35	3.25	14.5	4.1	2290	16
600065	560065	15X41/2-8		N/A	Solid	35	3	14.5	4.1	2290	16
600061	560061	16X6-8		N/A	Solid	39	4.33	16.0	5.5	3290	16
600033	560033	18X7-8		N/A	Solid	43	4.33	17.7	6.2	4730	16
600038	560038	140/55-9		N/A	Solid	31	4	14.8	4.9	2580	16
600041	560041	600-9		N/A	Solid	52	4	20.5	5.4	4150	16
600044	560044	21X8-9		N/A	Solid	56	6	20.5	7.4	6070	16
600095	560095	200/50-10		N/A	Solid	38	6.5	17.9	7.5	5440	16
600036	560036	650-10		N/A	Solid	59	5.5	22.3	6.3	5810	16
600051	560051	650-10		N/A	Solid	59	5	22.3	6.3	5810	16
600053	560053	23X9-10		N/A	Solid	70	6.5	22.8	7.6	7600	16
600071	560071	23X10-12		N/A	Solid	50	8	22.8	9.1	8250	16
600080	560080	700-12		N/A	Solid	61	5	25.4	6.8	6640	16
600082	560082	27X10-12		N/A	Solid	64	8	26.5	9.5	8530	16
600122	560122	700-15		N/A	Solid	57	5.5	27.8	7.1	7810	16
600133	560133	815-15		N/A	Solid	63	7	26.7	8.7	7600	16
600139	560139	825-15		N/A	Solid	76	6.5	31.8	7.6	10470	16
600842	560842	250-15		N/A	Solid	69	7.5	27.8	8.7	10460	16
600843	560843	250-15		N/A	Solid	69	7	27.8	8.7	10460	16
600056	560056	300-15		N/A	Solid	91	8	31.7	9.5	12890	16

### GALAXY LIFTOP SDS LUG - RESILIENT SOLID TIRE ONLY

The Galaxy Liftop SDS tire is specially designed for forklifts performing severe duty applications in warehouses. Special tread design with optimum tread depth ensures grip and stability.



PRODUCT CODE		SIZE	ALT	PR/LI	TYPE	TREAD	PREFERRED RIM	OD	WIDTH	MAX LOAD	MAX SPEED
STANDARD TYPE	LIP TYPE										
623827	622827	400-8		NA	Solid	41	3.00D-8	16.1	4.4	1896	6
632197		9.00-20		NA	Solid	90	7.00-20	38.2	9.1	11900	6

### GALAXY LIFTOP SDS RIB - RESILIENT SOLID TIRE ONLY

The Galaxy Liftop Rib SDS solid resilient tire is designed keeping in mind the needs of both forklift and baggage cart applications. Robust construction with unique tread designs ensure excellent durability and grip.



PRODUCT CODE		SIZE	ALT	PR/LI	TYPE	TREAD	PREFERRED RIM	OD	WIDTH	MAX LOAD	MAX SPEED
STANDARD TYPE	LIP TYPE										
631827	630827	400-8		NA	Solid	41	3.00D-8	15.9	4.6	1896	6

## PNEUMATIC TIRES

### GALAXY YARDMASTER ULTRA IND-1 / IND-3

The Galaxy Yard Master Ultra is a premium service deep treaded forklift tire engineered with a heavy-duty compound and sidewall to resist abrasions, punctures and impacts in the most demanding applications. The wide, flat tread profile provides excellent stability and long tread life (Set includes tubes and flaps).



PRODUCT CODE	SIZE	ALT. SIZE	PR/LI	TYPE	NSD (32NDS)	PREFERRED RIM	OD	WIDTH	RC	SLR	MAX LOAD (LBS)	PSI	MAX SPEED
256021	5.00-8		10	TT	18	3.00D	18.7	5.3	53	8.3	2756	145	10
256800	18X7-8		16	TT	21	4.33R	18.3	6.8	53	8.3	4670	145	10
256039	6.00-9		10	TT	20	4.00E	21.4	6.5	61	9.5	3710	125	10
256801	21X8-9		14	TT	20	6.00E	20.4	7.4	59.9	9.3	5181	145	10
256050	650-10		12	TT	22	5.00F	23.4	7.2	67	10.4	4740	140	10
256079	700-12		12	TT	23	5	26.9	7.6	77	11.9	6000	125	10
256121	700-15		12	TT	25	6	30.2	8.3	87	13.6	6940	125	10

## GALAXY YARDMASTER ULTRA IND-1 / IND-3 - continued

PRODUCT CODE	SIZE	ALT. SIZE	PR/LI	TYPE	NSD (32NDS)	PREFERRED RIM	OD	WIDTH	RC	SLR	MAX LOAD (LBS)	PSI	MAX SPEED
256127	750-15		12	TT	25	6.00G	31.8	8.7	92	14.2	7700	115	10
256134	28x9-15	8.15-15	14	TT	24	7	28	8.4	82	12.7	7520	140	10
256137	825-15		14	TT	25	6.5	33.1	9.6	95	14.7	9350	120	10
256178	250-15		16	TT	25	7.5	29.1	9.6	85	13.1	9450	135	10
256802	300-15		20	TT	30	8	33.3	11.8	95	14.8	14300	135	10
256313	9.00-20		14	TT	34	7	40.8	10.6	118	18.3	12800	100	10
256322	1000-20		16	TT	43	7.5	41.9	10.9	121	18.8	13800	115	5
256336	1200-20		20	TT	48	8.5	44.9	12.8	129	20.2	18300	145	5
256338	1200-20		28	TT	48	8.5	44.8	12.6	128	19.9	21255	145	5

## GALAXY YARDMASTER RADIAL IND-4

The Galaxy Yardmaster Radial has a heavy-duty tread designed for high mileage, maneuverability and stability. Its superior compound resists cuts, chips and abrasions giving it a longer tire life even on the most aggressive surfaces. The tire is built with extra protection against sidewall damage and has a special belt design for carcass durability.



PRODUCT CODE	SIZE	ALT. SIZE	PLY/*	PR/LI	TYPE	NSD (32NDS)	PREFERRED RIM	OD	WIDTH	RC	SLR	MAX LOAD (LBS)	PSI	MAX SPEED
250346	10.00R20		NA	166A5	TL	44	7.5	42	10.3	121.7	19.3	11700	145	15
250353	12.00R20		NA	176A5	TL	49	8.5	44.9	12.8	130.6	20.7	15650	145	15
250391	12.00R24		NA	178A5	TL	49	8.5	48.5	12.8	140.2	22.2	16530	145	15

## GALAXY BOSSLIFT III IND-3

The Galaxy Bosslift III is an ultra-premium-service tire that features heavy-duty construction and a super sidewall for resistance from abrasions, punctures, and impacts. The deep tread provides superior traction and long wear while its wide flat footprint gives the Bosslift III unrivaled stability and even load distribution (Set includes tubes and flaps).



PRODUCT CODE	SIZE	ALT. SIZE	PR/LI	TYPE	NSD (32NDS)	PREFERRED RIM	OD	WIDTH	RC	SLR	MAX LOAD (LBS)	PSI	MAX SPEED
259314	900-20		16	TT	33	7	40.9	10.2	123.1	18.7	12600	138	5
259322	1000-20		16	TT	37	7.5	42.7	11.2	128	19.3	13200	138	5
259236	1200-20		24	TT	38	8.5	44.8	13	126.9	19.4	18360	145	5

## GALAXY YARDMASTER IND-1

The Galaxy YardMaster is a premium service tire designed to operate in the most demanding applications. Engineered with a heavy duty construction to resist abrasions, punctures and impacts. The wide, flat tread profile provides excellent stability in forklift applications (Set includes tubes and flaps).



PRODUCT CODE	SIZE	ALT. SIZE	PR/LI	TYPE	NSD (32NDS)	PREFERRED RIM	OD	WIDTH	RC	SLR	MAX LOAD (LBS)	PSI	MAX SPEED
250021	500-8		10	TT	16	3.00D	18.5	5.2	52.7	8.2	2756	145	10
250800	18X7-8		16	TT	16	4.33R	18.3	6.6	56.8	8.8	4670	145	10
250039	6.00-9		10	TT	16	4.00E	21.4	6.5	60.9	9.5	3710	125	10
250801	21X8-9		14	TT	20	6.00E	21	8	59.9	9.3	5181	145	10
250050	650-10		12	TT	18	5.00F	23.7	7.2	67.5	10.5	4740	140	10
250079	700-12		12	TT	18	5	26.9	7.6	77	12	6000	125	10
250121	700-15		12	TT	20	6	30.2	8.4	87.4	13.6	6940	125	10
250127	750-15		12	TT	20	6.00G	31.8	8.5	91.6	14.2	7700	115	10
250134	28X9-15		14	TT	23	7	27.8	8.7	81.2	12.6	7520	140	10
250137	8.25-15		14	TT	23	6.5	33.3	9.3	95.5	14.8	9350	120	10
250178	250-15		16	TT	24	7.5	28.9	9.8	85.2	13.2	9450	135	10
250802	300-15		20	TT	37	8	33.1	11.8	95.8	14.9	14300	135	10
250021	500-8		10	TT	16	3.00D	18.5	5.2	52.7	8.2	2756	145	10
250800	18X7-8		16	TT	16	4.33R	18.3	6.6	56.8	8.8	4670	145	10
250039	6.00-9		10	TT	16	4.00E	21.4	6.5	60.9	9.5	3710	125	10
250801	21X8-9		14	TT	20	6.00E	21	8	59.9	9.3	5181	145	10
250050	650-10		12	TT	18	5.00F	23.7	7.2	67.5	10.5	4740	140	10
250079	700-12		12	TT	18	5	26.9	7.6	77	12	6000	125	10
250121	700-15		12	TT	20	6	30.2	8.4	87.4	13.6	6940	125	10
250127	750-15		12	TT	20	6.00G	31.8	8.5	91.6	14.2	7700	115	10
250134	28X9-15		14	TT	23	7	27.8	8.7	81.2	12.6	7520	140	10
250137	8.25-15		14	TT	23	6.5	33.3	9.3	95.5	14.8	9350	120	10
250178	250-15		16	TT	24	7.5	28.9	9.8	85.2	13.2	9450	135	10
250802	300-15		20	TT	37	8	33.1	11.8	95.8	14.9	14300	135	10

# TIRE SELECTOR BY APPLICATION



## Warehouse Operations

Smooth concrete surface with a requirement of maximum stability and minimum deflection of tire



## Loading/Unloading Operations

Damaged concrete surfaces in combination with metallic ramps creating demanding conditions



## Shop-floor Operations

Concrete surface + debris + obstructed aisles which damage sidewalls



## Port and Yard Operations

Paved/tarred abrasive surface creating demanding conditions for tires



## Uneven Surface Operations

Outdoor applications characterized by moderately uneven surfaces

● Solid Tire

● Radial Tire

# HEAVY DUTY

> 16 HRS OP

# MEDIUM DUTY

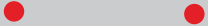
10-16 HRS OP

# LIGHT DUTY

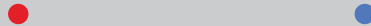
1-10 HRS OP



YM SDS    Yardmaster SDS    Yardmaster Ultra



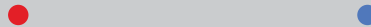
Yardmaster SDS    Yardmaster Ultra    Yardmaster Radial



Yardmaster SDS    Yardmaster Ultra



Yardmaster SDS    Yardmaster Ultra    Yardmaster Radial



Yardmaster Ultra    Yardmaster Radial



Yardmaster



Yardmaster    Bosslift III



Yardmaster



Bosslift III



Yardmaster    Bosslift III



Lifter SDS



Lifter SDS



Lifter SDS



Lifter SDS

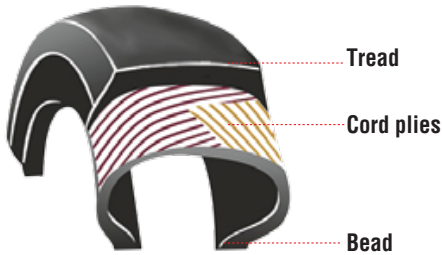
Use solids when downtime or puncture resistance is critical & pneumatics when shock absorption is the most critical requirement of a tire

# BUILT TOUGH FOR EVERY CONDITION

Galaxy forklift tires are designed to operate in the most demanding applications. The tires are engineered with our heavy-duty construction to resist abrasions, punctures and impacts. Their wide, flat tread profile provides excellent stability across various applications.

## PNEUMATIC BIAS TIRE

Multi-layer stiff fabric sidewall for stability and shock absorption when application demands it



**Key Construction Features**  
Large Industrial Block Design  
**Fabric/Construction**  
Textile

## PNEUMATIC RADIAL TIRE

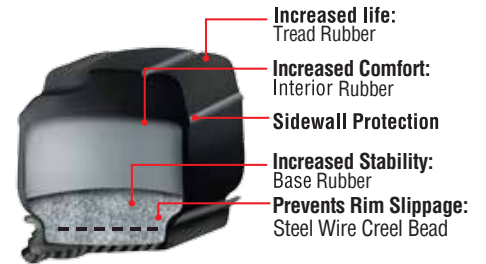
Low heat generating radial construction for long cycle operations



**Key Construction Features**  
Radial Construction  
**Fabric/Construction**  
Textile

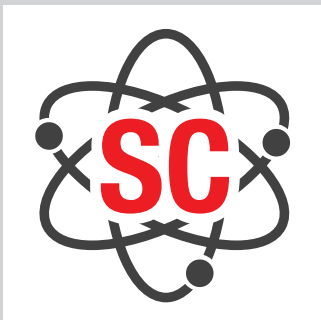
## SOLID TIRE

Eliminates Downtime and punctures



**Key Construction Features**  
Three-stage Construction  
**Special Compound**  
Cut & Chip Resistant and Cooler Running Compound  
**Fabric/Construction**  
Solid

### SUPERIOR COMPOUNDS



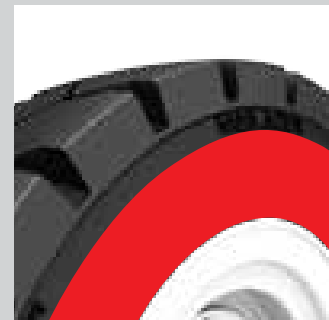
Superior compound formulation ensures improved cut, chip and wear resistance for longer service

### HEAVY DUTY INDUSTRIAL PATTERN



Prevents fast wear / provides required traction for operations  
Long efficient life of tire

### FORTIFIED SIDEWALL



Protection from sidewall cuts  
Reduces downtime

VISIT [YOKOHAMA-OHT.COM](http://YOKOHAMA-OHT.COM) FOR DETAILED LOAD AND PRESSURE TABLES

Distributor:

Yokohama Off-Highway Tires (YOHT) is a division of The Yokohama Rubber Co., specializing in Agriculture, Forestry, Construction, Industrial, Material Handling, Earthmoving, Mining, Port and other commercial tires. YOHT sells its diverse product range, consisting of over 4,000 SKUs, in over 120 countries through its subsidiaries and channel partners. YOHT products are engineered to be application-specific and purpose-built. For more information visit [www.yokohama-oht.com](http://www.yokohama-oht.com) or email us at [info@yokohama-oht.com](mailto:info@yokohama-oht.com).



Contact Yokohama Off-Highway Tires America, Inc. at (800) 343-3276 or (339) 900-8080 for your nearest Yokohama OHT Tire Dealer.

[facebook.com/yokohamaohta](https://www.facebook.com/yokohamaohta)

[@yokohamaohta](https://twitter.com/yokohamaohta)

[yohta-blog.yokohama-oht.com](http://yohta-blog.yokohama-oht.com)

[yokohama-oht.com](http://yokohama-oht.com)